

IS 345 MX Highbay

The specialist for high ceilings.

Surveillance quality right up at the top.

High-bay warehouses, machine halls, terminal buildings and waiting areas often have high ceilings. Too high for most sensors, except for this one. Infrared motion detector IS 345 MX Highbay was developed specifically for installing at heights of up to 12 metres. Perched up there, it gives you surveillance quality at the highest level, quite literally. So in future, think higher standards when it comes to sensor systems!



infrared sensor



max. 30m x 4m

2000w max.



IP 54



4-12m



2-2000 lux



5 sec-15 min

TEACH mode



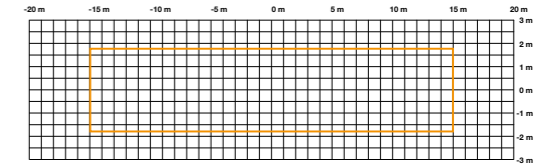
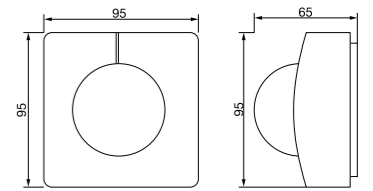
energy saving

5-JAHRE GARANTIE

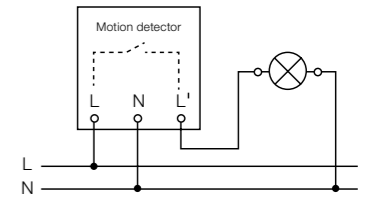
functional warranty



EAN IS 345 MX Highbay	4007841 002725
Type	Motion detector
Dimensions (H x W x D)	95 x 95 x 65.5 mm
Power supply	230 - 240 V, 50 Hz (2.5 mm ² max)
Sensor type	Passive infrared
Where to use	Indoors and outdoors
Installation	Ceiling, corridor
Recommended installation height	4.00 - 12.00 m
Output (resistive load, e.g. ordinary lamp)	2000 W max.
Output (uncorrected, inductive, cos φ = 0.5, e.g. fluorescent lamps)	1000 VA max.
Output (series-corrected)	900 W max.
Output (parallel-corrected, with C ≤ 45.6 μF)	500 W max.
Output (electronic ballasts, capacitive, e.g. low-energy lamps)	.8 each max., C ≤ 176 μF
Angle of coverage	.51° with 9° angle of aperture
Capability of masking out individual segments	Yes
Reach	30 x 4 m max. (radially) mounted at a height of 12 m; temperature-stabilised. Precision adjustment using shrouds
Sensor system	5 detection levels, 280 switching zones
Response light level	.2 - 2000 lx
Response light level teach function	Yes
Time setting	5 sec. - 15 min., pulse mode (approx. 2 sec.)
Manual override	Selectable, 4 h
IP rating	IP54
Protection class	II
Temperature range	-20 - +50 °C



IS 345 MX Highbay detection zone
Mounting height 12.5 m
orange = radial walking direction



Also suitable for parallel operating mode.
Intrinsic light detection.

Further circuit diagrams starting on page 328

UV-resistant plastic



Large terminal compartment

