

## Light management revolutionarily simple. LiveLink

LiveLink is the new DALI-based light management system developed by STEINEL in cooperation with the lighting specialists TRILUX. What used to be very complex and time intensive can now be configured with LiveLink in just a few minutes without any specialist knowledge or programming experience. Operation is simple and intuitive via tablet or smartphone. The LiveLink app assists you step by step through the installation process. Common application scenarios, such as in an office or classroom, are stored as so-called Use Cases and make planning particularly simple. Special, highly sensitive LiveLink sensors from STEINEL control the light precisely depending on room use and the amount of daylight present.



LiveLink. Software developed for today's electrical fitters.

In cooperation with planners, architects, electrical fitters and users, we placed the greatest value on the needs of the users when developing this software. The graphic user interface and the intuitive user prompts are proving to be great advantages in practice. These not only make fast, easy work of installing the LiveLink components but also of configuring them and setting them for the specific situation.

The app. Plan intelligently and configure via drag and drop.

For commissioning, the "LiveLink Install" app provides the fitter with numerous intelligent functions for configuring the light management system quickly, accurately and easily. The LiveLink apps are available for iOS and Android operating systems and are extremely user-friendly. The "LiveLink Control" app allows the end user to adjust light quickly and simply to personal or situational demands.

LiveLink anticipates. Many applications are already preconfigured.

To simplify the planning and installation of lights, LiveLink offers the user a series of preset room configurations. These "Use Cases" give the user the certainty of optimised lighting configured in compliance with industry standards. Grouping lights and presetting them accordingly ensures that the electrical fitter can commission the light management system without any effort at all.

The right solution for every building and every application.

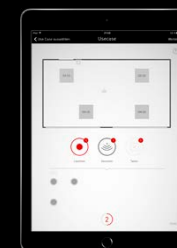
LiveLink combines knowledge of architectural conditions and various industry-specific requirements. It provides electrical fitters and users with professional and yet simple and secure access to the possibilities of lighting control. This way, almost every segment and application can benefit from LiveLink because it caters to any scenario and standard.



Intuitive operation



Search for Use Case



Assign components



Assign sensor functions



Done



Office



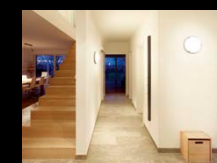
Industry



Health care



Shop



At home



Education



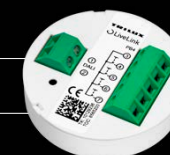
The LiveLink system can be fitted with all DALI lights. This is where TRILUX comes in, with a comprehensive range of options for all sorts of different applications, giving planners and architects broad creative flexibility in providing optimum lighting for any situation.

## LiveLink

Addressable DALI - simpler than ever before.

Light management was never more reliable and quicker to plan, install and operate than it is with LiveLink. With just one control device and two convenient apps, individually definable spaces can be configured and controlled in next to no time. Installing LiveLink starts with conventional DALI wiring: the components - lights, sensors and switches - are connected to the control device via DALI. The control device and lights also require a standard power connection.

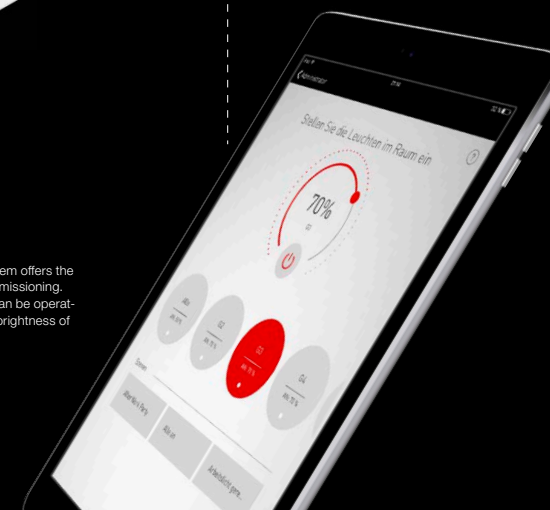
The control device features a DALI interface and can be controlled by tablet, smartphone or switch. It can operate up to 16 light groups and 64 individual components. An integrated, autonomous WiFi network provides optimum connection and security.



The LiveLink switch coupler provides the capability of integrating up to four standard switches into the the LiveLink system. Installed simply behind the switches in the concealed box. Saved lighting scenarios can be assigned to individual buttons, making them available for selection in everyday use at the press of a button.



The "sensory organs" of the LiveLink system are the STEINEL sensors of the LiveLink series. Whether infrared or high-frequency technology, whether room, corridor or light sensor, the range offers the right sensor for any application.



With the "LiveLink Install" app, the LiveLink system offers the appropriate software for configuration and commissioning. The "LiveLink Control" app is for the user and can be operated from tablets or smartphones for setting the brightness of lights or for selecting lighting scenarios.

## LiveLink products overview



### LiveLink control box

Dimensions: (H x W x D) 21 x 204 x 30 mm  
 Power supply: 220 - 230 V, 50 / 60 Hz  
 Interfaces: DALI and WiFi  
 DALI supply: integrated DALI bus supply, max. 64 bus users  
 WiFi connection: 868 MHz  
 Control: via tablet and LiveLink Install app for commissioning  
 Via smartphone/tablet and LiveLink Control app for control  
 Additional inputs: switch input (230 V) with touch-dim function for one or more lighting groups or for selecting programmed lighting scenarios  
 Material: plastic  
 EAN 4007841 013653



### IR Quattro HD LiveLink

Dimensions (W x H x D): 120 x 120 x 70 mm  
 Power supply: DALI bus voltage  
 Current consumption: 2 DALI users  
 Sensor technology: passive infrared, 4800 switching zones, 4 pyro sensors  
 Mechanically scalable reach  
 Angle of coverage: 360°  
 Mounting height: max. 10 m  
 Reach (H = 2.8 m): max. 8 x 8 m presence/radial, max. 20 x 20 m tangential  
 Settings: via LiveLink app  
 Light level: 10-1000 lux, daylight operation  
 Time setting: 30 sec - 60 min, IQ mode  
 User-friendly functions: motion detection, light-level measurement, time setting, semi-automatic / fully automatic, teach mode, constant-lighting control  
 IP rating / protection class: IP 20 / III  
 Temperature range: -20°C to +55°C  
 Material: UV-resistant plastic (casing), HDPE (lens)  
 EAN 4007841 009717



### IR Micro LiveLink

Dimensions: (Ø x D) 80 x 21 mm  
 Power supply: DALI bus voltage  
 Current consumption: 1 DALI user  
 Sensor technology: passive infrared  
 Angle of coverage: 360° with 90° angle of aperture  
 Mounting height: 2.8 m  
 Reach: 4 x 4 m presence and radial, 6 x 6 m tangential  
 Settings: via LiveLink app  
 Light level: 2-2000 lux  
 Time setting: 1 min - 60 min, IQ  
 User-friendly functions: motion detection, reach setting, brightness measurement, constant light control, semi-automatic / fully automatic, teach mode, test mode, daylight mode  
 IP rating / protection class: IP 20 / III  
 Temperature range: 0°C to +40°C  
 Material: UV-resistant plastic (casing), HDPE (lens)  
 EAN 4007841 009748



### IR Quattro SLIM XS LiveLink

Dimensions: (H x W x D) 80 x 80 x 51 mm  
 Power supply: DALI bus voltage  
 Current consumption: 2 DALI users  
 Sensor technology: passive infrared  
 Angle of coverage: 360°  
 Mounting height: max. 4 m  
 Reach: 4 x 4 m presence, radial, tangential  
 Settings: via LiveLink app  
 Time setting: 1 min - 60 min, IQ  
 Twilight setting: 10 - 1000 lux  
 User-friendly functions: motion detection, reach setting, brightness measurement, constant-control, time setting, semi-automatic / fully automatic, teach mode, test mode, daylight operation  
 IP rating / protection class: IP 20 / II  
 Temperature range: 0°C to +40°C  
 Material: UV-resistant plastic (casing), HDPE (lens)  
 EAN 4007841 033040



### Dual HF LiveLink

Dimensions (W x H x D): 120 x 120 x 75 mm  
 Power supply: DALI bus voltage  
 Current consumption: 7 DALI participants  
 Sensor technology: high frequency, 5.8 GHz  
 Angle of coverage: corridor  
 Mounting height: max. 4 m  
 Reach (H = 2.8 m): max. 20 x 3 m, (10 x 3 m in each direction)  
 Settings: via LiveLink app  
 Light level: 10-1000 lux, daylight operation  
 Time setting: 30 sec - 60 min, IQ mode  
 User-friendly functions: motion detection, light-level measurement, time setting, semi-automatic / fully automatic, teach mode, constant-lighting control  
 IP rating / protection class: IP 20 / III  
 Temperature range: -20°C to +55°C  
 Material: UV-resistant plastic  
 EAN 4007841 009700



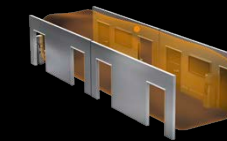
### Switch coupler: 4x DALI

Dimensions: (Ø x H) Ø 50 x 16 mm  
 Power supply: DALI bus voltage  
 Current consumption: 1 DALI user  
 Inputs: 4 inputs for conventional switches  
 Commissioning: via tablet and LiveLink Install app  
 Functions: freely selectable during commissioning; Touch-dim function of one or more light groups, selecting programmed light scenarios  
 Material: plastic  
 EAN 4007841 013660



### LiveLink KNX gateway

Integration of LiveLink components into KNX building automation  
 EAN 4007841 034009



## LiveLink products overview



### Light Sensor Dual LiveLink

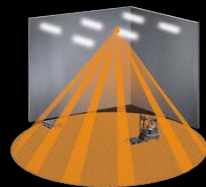
Dimensions: (H x W x D): 95 x 95 x 65 mm  
 Power supply: DALI bus voltage  
 Current consumption: 1 DALI user  
 Sensor technology: photodiode  
 Angle of coverage: directed and diffuse  
 Light level: 2-1000 lux  
 Settings: via LiveLink app  
 User-friendly functions: brightness measurement  
 diffuse or directed, constant-lighting control  
 Mounting: ceiling, wall  
 Suitable for use: indoors and outdoors  
 IP rating / protection class: IP 54 / III  
 Temperature range: 0°C to +40°C  
 Material: UV-resistant plastic  
 EAN 4007841 009762

### IS 345 MX Highbay LiveLink

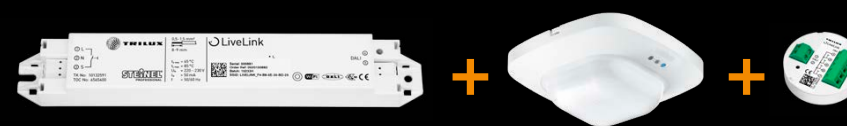
Dimensions: (H x W x D): 95 x 95 x 65 mm  
 Power supply: DALI bus voltage  
 Current consumption: 2 DALI users  
 Sensor technology: passive infrared  
 Angle of coverage: 51° with 9° angle of aperture  
 Mounting height: 4 - 14 m  
 Reach: max. 30 x 4 m (radial)  
 Settings: via LiveLink app  
 Light level: 2-1000 lux  
 Time setting: 1 min – 60 min, IQ  
 User-friendly functions: motion detection,  
 brightness measurement, time setting,  
 semi-automatic / fully automatic, teach mode,  
 test mode, daylight operation  
 IP rating / protection class: IP 54 / III  
 Temperature range: -20°C to +50°C  
 Material: UV-resistant plastic (casing), HDPE (lens)  
 EAN 4007841 009731

### IS 3360 MX Highbay LiveLink

Dimensions: (H x W x D): 95 x 95 x 65 mm  
 Power supply: DALI bus voltage  
 Current consumption: 2 DALI users  
 Sensor technology: passive infrared  
 Angle of coverage: 360°  
 Mounting height: 4 - 14 m  
 Reach: max. 18 m (tangential)  
 Settings: via LiveLink app  
 Light level: 2-1000 lux  
 Time setting: 1 min – 60 min, IQ  
 User-friendly functions: motion detection,  
 brightness measurement, time setting,  
 semi-automatic / fully automatic, teach mode,  
 test mode, daylight operation  
 IP rating / protection class: IP 54 / III  
 Temperature range: -20°C to +50°C  
 Material: UV-resistant plastic (casing), HDPE (lens)  
 EAN 4007841 009724



## LiveLink-Starterkit



### LiveLink-Starterkit

Includes LiveLink control box,  
 IR Quattro HD LiveLink and the  
 switch coupler 4x DALI  
 EAN 4007841 033958

