

# sensIQ S

## The evolution of perfection. The reference in compact design.

Handsome addition! The sensIQ S is just as perfect in form and functional diversity as its larger role model. A look that architects like. This designer motion detector was developed specifically for wall mounting though. Being altogether more compact than its big brother, the sensIQ S nestles up against the facade, perfectly harmonising with modern, purist architecture. Its inner values are spectacular too because it comes with the same highly intelligent features and setting options as the sensIQ.



infrared sensor  
3 x 100°



3 zones scalable  
2-20m



2000W  
max.



IP 54



2-5m



2-2000 lux



5 sec-15 min



energy  
saving



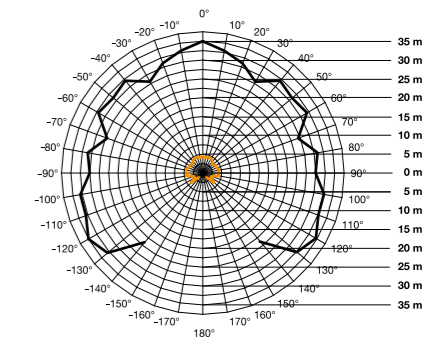
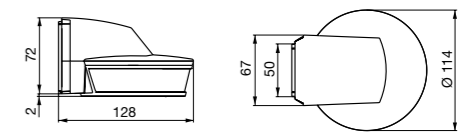
5 YEAR  
WARRANTY  
functional  
warranty

EAN sensIQ S white ..... 4007841 003944  
EAN sensIQ S stainless steel ..... 4007841 003968  
EAN sensIQ S black ..... 4007841 003951



**You will find the KNX version on page 124.**

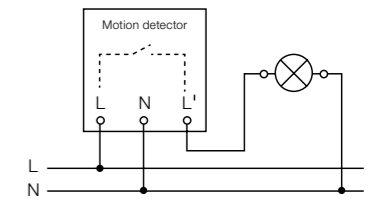
Type ..... Motion detector  
Dimensions (H x W x D) ..... 114x74x128mm  
Power supply ..... 100-240V, 50/60Hz (2.5mm<sup>2</sup> max.)  
Sensor type ..... Passive infrared  
Where to use ..... Indoors and outdoors  
Installation ..... Wall, corner  
Recommended installation height ..... 2.00-5.00 m  
Output (resistive load, e.g. ordinary lamp) ..... 2000 W max. for 230 V  
..... 1200W max. for 120V  
Output (uncorrected, inductive,  
cos φ = 0.5, e.g. fluorescent lamps) ..... 1000VA max. for 230V  
..... 500VA max. for 120V  
Inrush current ..... 800 A / 200 μs max.  
Electronic ballast ..... 30x (1x18W), 25x (2x18W)  
..... 25x (1x36W), 15x (2x36W)  
..... 20x (1x58W), 10x (2x58W)  
Angle of coverage ..... 300° with 180° angle of aperture  
Capability of masking out individual segments ..... Yes  
Sneak-by guard / coverage directly below the sensor ..... Yes  
Reach ..... Can be adjusted in 3 directions by control dial,  
..... (2-20m max. tangentially, temperature-stabilised)  
Sensor system ..... 4 sensors, 6 detection levels for long-distance detection  
..... and 5 for sneak-by protection, 1360 switching zones  
Response brightness ..... 2-2000 lx  
Time setting ..... 5 sec. - 15 min., pulse mode (approx. 2 sec.)  
Manual override ..... selectable, 4 h  
Light permanently OFF ..... selectable  
IP rating ..... IP54  
Protection class ..... II  
Temperature range ..... -20 to +50°C



sensIQ detection zone  
Mounting height 1.8 m  
black = tangential walking direction  
orange = radial walking direction



3 scalable zones



Also suitable for parallel operating mode.

Further circuit diagrams starting on page 328

### Accessories

EAN IR remote control RC1 ..... 4007841 601416  
EAN corner wall mount, white ..... 4007841 608835  
EAN corner wall mount, stainless steel ..... 4007841 608804  
EAN corner wall mount, black ..... 4007841 608828  
Refer to the 'Accessories' section for further information.



white



stainless steel



black



4x pyro-system



Remote control  
RC1 included



Optional corner  
wall mount bracket

