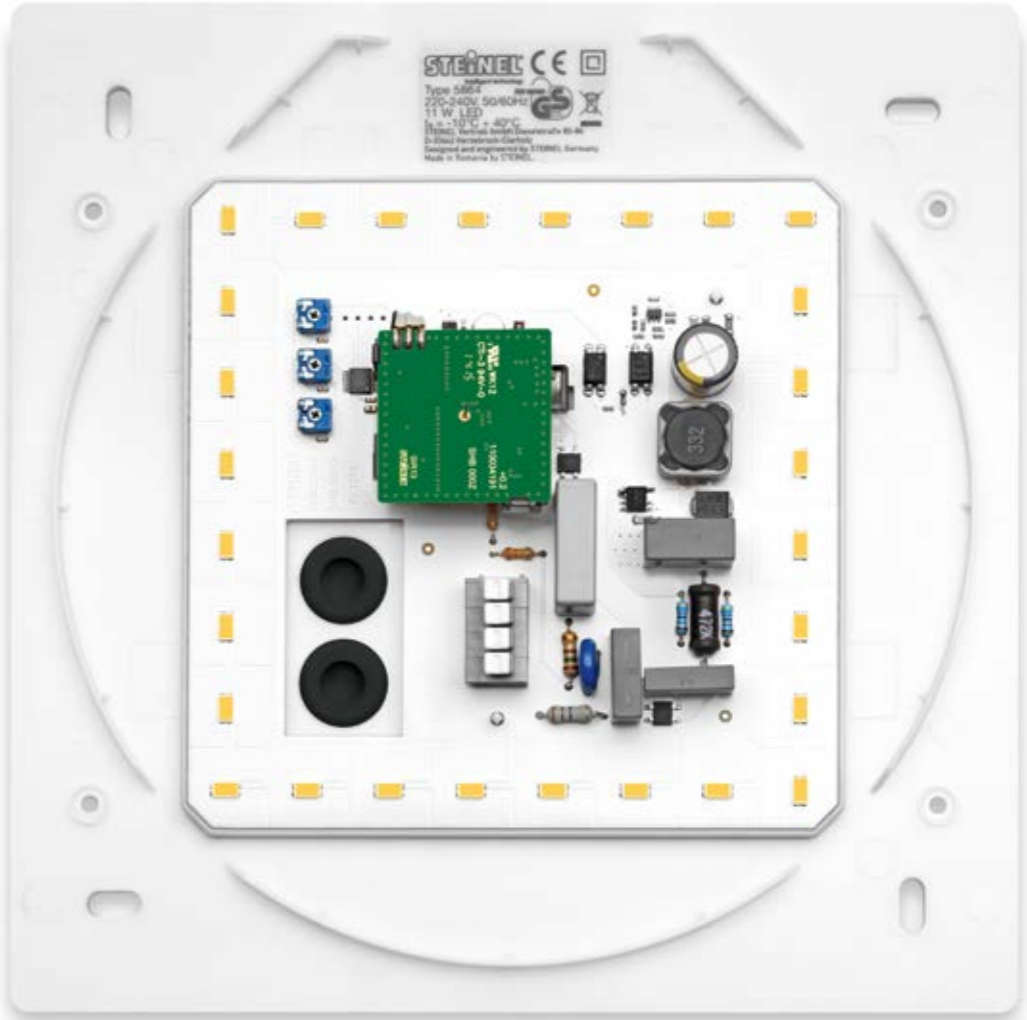




RS LED D2





RS LED D1 · RS LED D2

**It's always been attractive.
Now it's even brighter.**

Sleek, attractive lines. Opting for the RS LED D1/D2 designer indoor luminaire, you'll be giving your home a real designer highlight with pleasant LED illumination. With its stunning looks and intelligent technology, this light provides the last word in stylish home convenience. Once fitted to the wall or ceiling, the high-frequency sensor switches it 'ON' and 'OFF' in complete silence and all automatically. The light is child's play to install and the function settings on the product are easy to understand too. Your neighbours will be amazed.

LED
30 years
(\varnothing 4.5 h/day)

11w
600lm
54.5lm/W

3000K
warm-white

high frequency
sensor 360°

\varnothing 3–8 m

2–2000 lux

5 sec–15 min

energy
saving

3 JAHRE
functional
warranty

**LONG LIFE
LED**



EAN RS LED D1	4007841 007911
EAN RS LED D2	4007841 007928
Dimensions (h x w x d)	300 x 300 x 65.5 mm
Power supply	220–240 V, 50/60 Hz
Sensor type	high frequency
Transmission power	approx. 1 mW
HF system	5.8 GHz
Output	11 W
Brightness	600 lm
Efficiency	54.5 lm/W
Colour temperature	3000K/SDCM 3
Colour rendering	Ra \geq 80
LED life expectancy	50,000 h (L70B10 to LM80)
LED cooling system	Passive Thermo Control
Angle of coverage	360° with 160° angle of aperture
Detection	if necessary, through glass, wood and stud walls
Reach	\varnothing 3–8 m max., continuously variable
Response brightness	2–2000 lx
Time setting	5 sec. - 15 min.
IP rating	IP20
Protection class	II
Material	UV-resistant plastic and plastic diffuser
Temperature range	-10 to 40°C
With lamp	STEINEL LED system



RS LED D1
chrome-plated
metal surround

RS LED D2
brushed stainless steel

